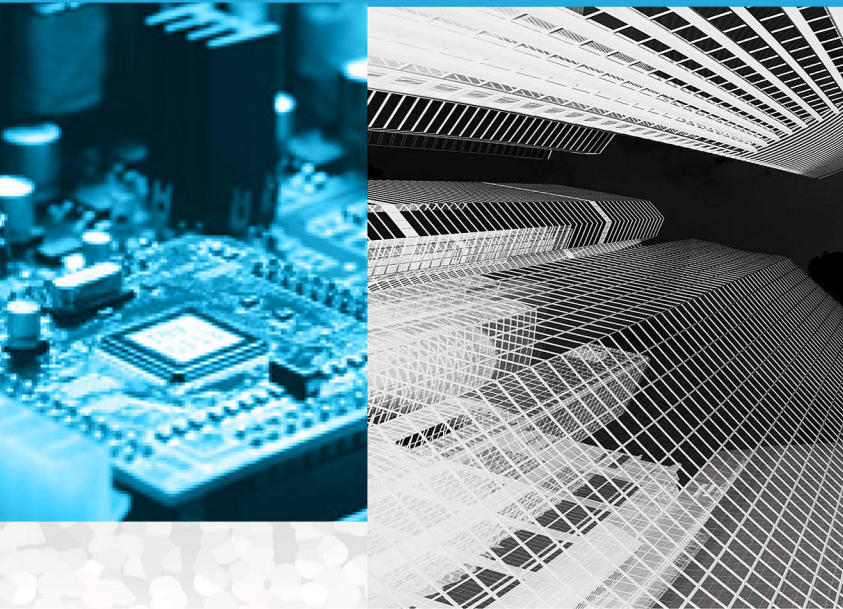


NEO STS SERIES (3P-4P)

THREE-PHASE STATIC TRANSFER SWITCHES 50A to 800A





NEO-STS 3P-4P SERIES

NEO-STS, allows instantaneous transfer of power sources to the load device to ensure continuous and reliable power distributions.

- 2 AC input with 3 phase switching
- Uninterruptible transfer between the independent sources
- Synchron/asynchron transfer feature
- Source priority selection
- 3 pole and neutral transfer 4 pole option
- Automatic and Manual transfer in case of failure on both sources
- Internal manual bypass
- Event Log with Detailed Parameters
- Input voltage parametre selection from the menu
- Easy Maintenance
- High Efficiency
- RS232/RS485 communication capabilities
- Modbus,SNMP multi communication
- Dry contacts



Neo-Sts Series

(3 and 4 Pole)

MODEL	N-STS 3050	N-STS 3100	N-STS 3150	N-STS 3200	N-STS 3250	N-STS 3300	N-STS 3400	N-STS 3600	N-STS 3800
	N-STS 4050	N-STS 4100	N-STS 4150	N-STS 4200	N-STS 4250	N-STS 4300	N-STS 4400	N-STS 4600	N-STS 4800
Nominal Current	50A	100A	150A	200A	250A	300A	400A	600A	800A
Electrical Data									
Input Voltage	380/400/415 VAC 3P + N + G								
Input Voltage Range	180-264 VAC (PH-N)								
Input Frequency	50Hz / 60Hz								
Input Frequency Range (operation range adjustable)	46-54 Hz (for 50 Hz) 56-64 Hz (for 60 Hz)								
Transfer Type	"Break before make"								
Transfer Methods Available	Automatic / Manual / Remote								
Transfer Control	Synchron With Adjustable Delay (non synchron) Zero Current (non synchron)								
Transfer Time	≤4 msec for synchronous sources ≤ 10 msec for non-synchronous sources								
Switching Type	3-Poles: 3 phase switching / 4-Poles: 3 phase + Neutral switching								
Output Current Crest Factor	3:1								
Admissible Overload	0-100% continuous 101-150% 1 minute 151-200% 10 second >200% 250 msec								
Protections	Output overload and short circuit protection, Overtemperature protection, SCR fault protection								
LCD Panel and Mimic	Standard								
Communication	RS232 standard, RS485 optional								
SNMP Connection	Optional								
Dry Contacts	3 programmable relay outputs								
Modbus	Available								
Environmental Data									
Cooling	Forced cooling								
Cooling Air Direction	From front to rear								
Operating Temperature	0°C - 40°C								
Storage Temperature	-10°C up to +50°C								
Relative Humidity	90% max. (non-condensing)								
Protection Degree	IP20								
Standards	EN 62310-1, EN 62310-2								
Max. Operation Height	1000m. at nominal current rating								
Acoustic Noise	<45 dBA	<55 dBA					<60 dBA		
Mechanical Data									
Net Weight 3 Pole(kg)	120	125	145	175	185	210	230	310	350
Net Weight 4 Pole (kg)	140	155	170	185	215	220	235	350	370
Dimensions HxWxD(mm)	812x302x715		1200x430x960				1300 x 560 x 900		
Power Cables Connection	Terminals								



The company reserves the right to change specifications and designs without notice.

www.innovasis.com.tr